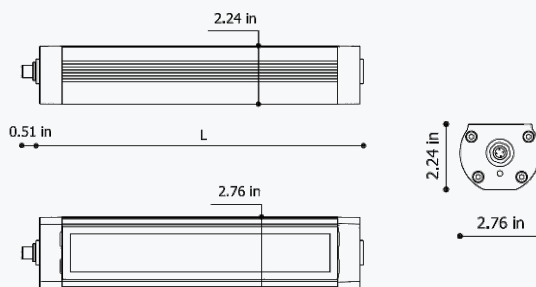
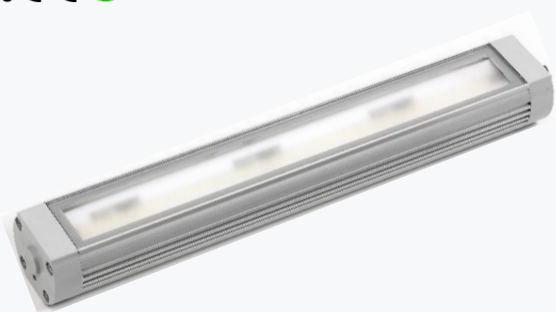


TRACK ALPHA

TA0321S02



Length: 17.36 in (441 mm)

MECHANICAL FEATURES

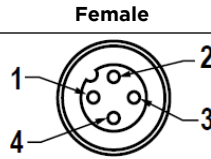
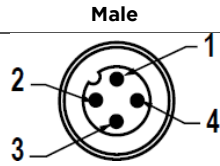
Casing Material	Anodized extruded aluminum
Surface Treatment	Standard: 10 microns of natural aluminum solution oxidation
Side Enclosures	Powder coated aluminum
Front Glass	Extra clear tempered 0.20 in (5 mm) thick frosted glass
Protection Index	IP67 (compatible with NEMA 6)
Impact Resistance	1.00 N m/s
Operating Temperature	-04°F (-20°C) to +113°F (+ 45°C)
Fixture	Chrome-plated Stainless-steel side mounting brackets
Weight (excluding accessories)	~ 3.64 lb (1.65 Kg)

ELECTRICAL & OPTICAL FEATURES

Power Usage	~ 19.5 W
Power Supply	22 - 28 Vdc
Electrical Connection	M12-A 4P Male
Power Cord	On request
LED N° and Type	54 Mid Power LEDs
LED Lifetime	L70 **
Light Color	5,000 K
CRI	80
Light Beam Angle	~ 120°
Luminous Flux	~ 1,950 lum
Efficiency	~ 100 lum/W

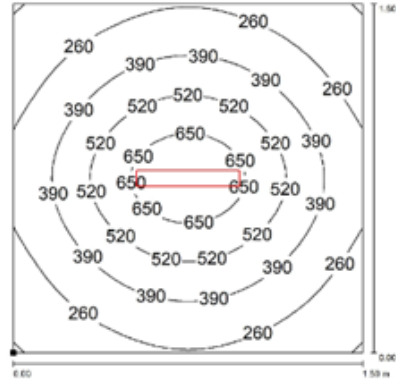
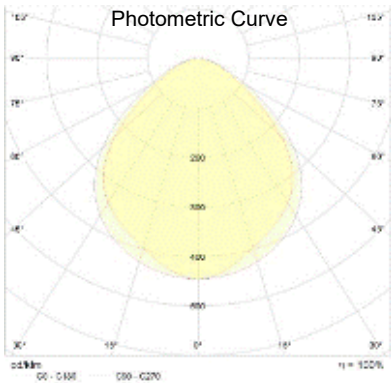
** The luminous flux output decreases less than 30% after 60,000 hours.

WIRING DIAGRAM



Pin	Connection
1	+24 Vdc
2	GND
3	0 Vdc
4	Not Connected

PHOTOMETRIC DIAGRAMS



Note: this surface is 1.5 m x 1.5 m

MOUNTING OPTIONS

Product pictures

Description

Code product



Robust, versatile and vibration resistant, it is a 70° angle adjustment bracket. Made of chrome-plated stainless steel, it is the perfect solution when you need to adjust the direction of the flow beam in high-vibrating applications.

TAFX01



Sturdy, flexible and vibration resistant, it is a 30° angle adjustment bracket. Made of anodized aluminum, it is the perfect solution when you need to retrofit an obsolete machine tools and machining centers.
*1 unit per code, if you want to have both clips, you will need to command TACLIPx2

TACLIP



Strong magnetic disc made of neodymium and high grip. Use along with ALPHA.FX02 brackets when you need to move the light frequently and to different positions. Suitable to use in high-vibrating applications.

B03