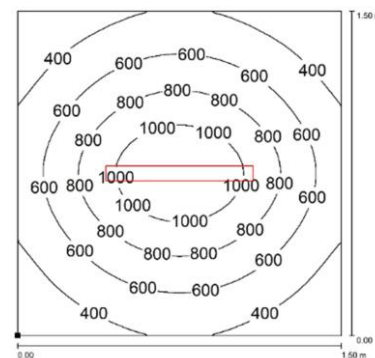
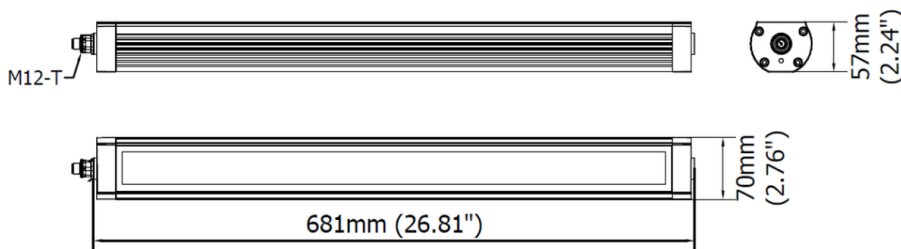


# TA0521S02 TRACKALPHA



## PRODUCT FEATURES

<b>Power usage</b>	32,5 W
<b>Power supply</b>	24 Vdc
<b>Light source</b>	LED
<b>Electrical connection</b>	M12-T 4P Male
<b>Color temperature</b>	5000K, CRI 80
<b>Luminous flux</b>	3250 lm
<b>Efficiency</b>	100 lm/W
<b>Light beam angle</b>	120°
<b>Housing</b>	Anodized aluminum
<b>Front protection</b>	Tempered satin glass
<b>Protection index</b>	IP67 (compatible with NEMA TYPE 12)
<b>Impact resistance</b>	IK06
<b>Operating temperature</b>	-20°C to + 45°C (-04°F to +113°F)
<b>Weight</b>	2,55 kg (5,62 lb)
<b>Agency approvals</b>	cURus in compliance with UL2108, CSA C22.2, CE, RoHs
<b>Mounting</b>	TAFX02, TACLIP, B03



**NOTE:** Installation Height: 1m