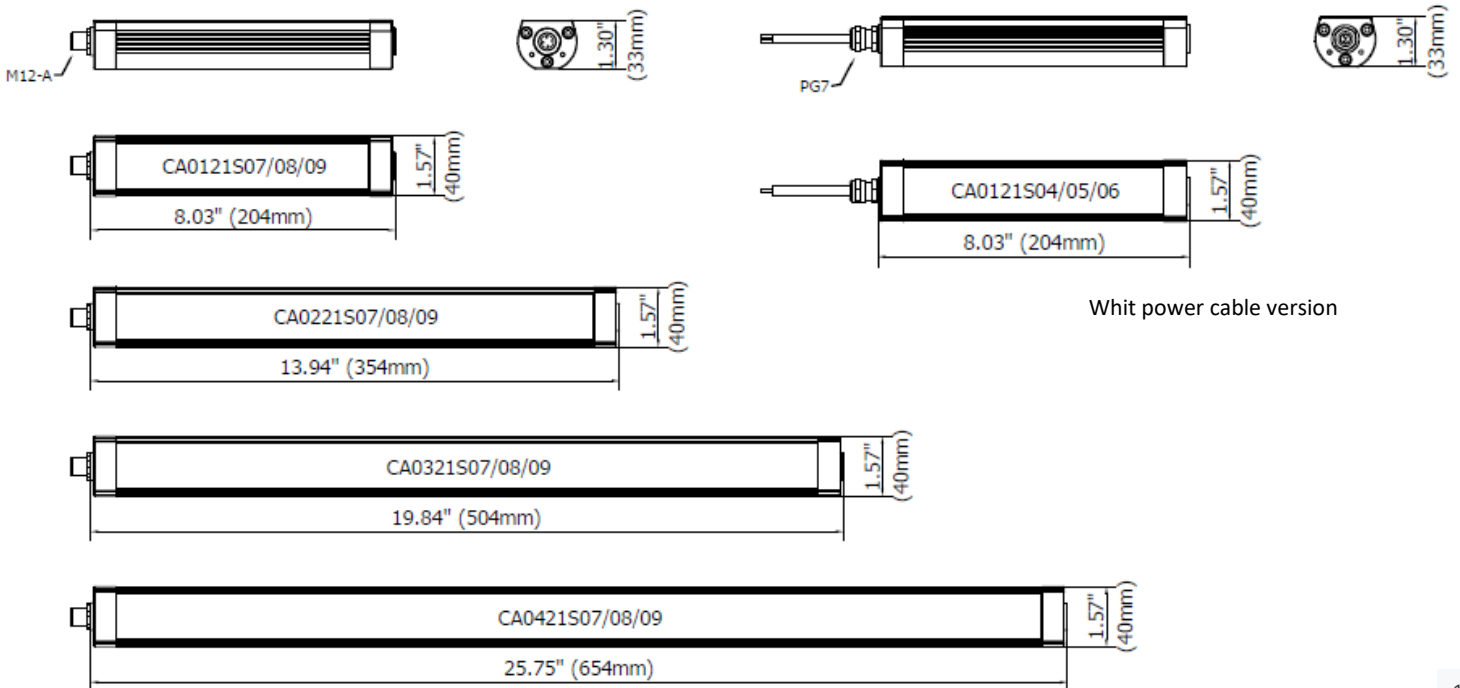




Designed for use in different work environments, A compact construction combining state-of-the art LED technology with a sturdy, anodized aluminum casing highly resistant to liquids and machine tool debris. Particularly suitable in any workplace where the space is very limited, but at the same time requires high-performance and intense lighting.

- Structure made entirely of anodized aluminum
- Outer diameter 1.57in (40mm) to be integrated into confined workspaces
- 4 lengths to meet every need
- Operating temperature from -04°F (-20°C) to +113°F (+ 45°C)
- Three light beam amplitudes: 30° Focused - 90° Wide - 110° Diffuse
- LED lifespan: (L 70) > 60 000 h
- Light color 5000 K - CRI 80
- 24 Vdc via M12 or 10ft. (3m) Cable for more flexibility
- 16.40ft (5m) power cord
- Attaching with COALPHA.FX01 side-mounting brackets
- Approval: cURus in compliance with UL2018 / CSA / CE

DIMENSIONS



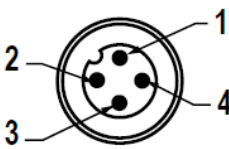
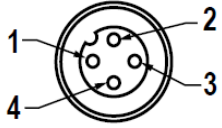
MECHANICAL FEATURES

Model	CA0121S04 CA0121S05 CA0121S06	CA0121S07 CA0121S08 CA0121S09	CA0221S04 CA0221S05 CA0221S06	CA0221S07 CA0221S08 CA0221S09	CA0321S04 CA0321S05 CA0321S06	CA0321S07 CA0321S08 CA0321S09	CA0421S04 CA0421S05 CA0421S06	CA0421S07 CA0421S08 CA0421S09
Casing Material	Anodized extruded aluminum							
Side Enclosers	Anodized aluminum							
Surface Treatment	Standard: 10 microns of natural aluminum solution oxidation							
Front Glass	Extra clear tempered 0.16 in (4 mm) thick frosted glass IK06							
Weight	1.15 lb (0.55kg)	0.82 lb (0.40kg)	1.65 lb (0.75kg)	1.30 lb (0.60kg)	2.20 lb (1.00kg)	1.85 lb (0.85kg)	2.87 lb (1.30kg)	2.38 lb (1.10kg)
Protection Index	IP67 Compatible with NEMA Type 12							
Impact Resistance	1.00 N m/s							
Operating Temperature	04°F (-20°C) to +113°F (+ 45°C)							
Installation	CAFX01 / Magnet B05							

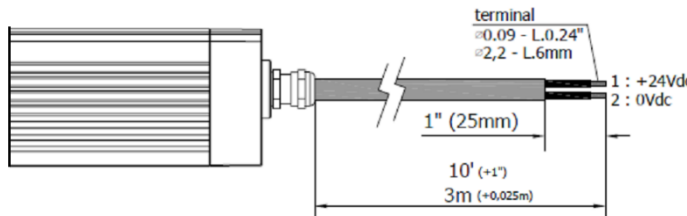
ELECTRICAL FEATURES

Model	CA0121S04 CA0121S05 CA0121S06	CA0121S07 CA0121S08 CA0121S09	CA0221S04 CA0221S05 CA0221S06	CA0221S07 CA0221S08 CA0221S09	CA0321S04 CA0321S05 CA0321S06	CA0321S07 CA0321S08 CA0321S09	CA0421S04 CA0421S05 CA0421S06	CA0421S07 CA0421S08 CA0421S09
Power Input	6 W		12 W		18 W		24 W	
Power Supply	24 Vdc							
Current	0.25 A @ 24 Vdc		0.50 A @ 24 Vdc		0.75 A @ 24 Vdc		1 A @ 24 Vdc	
Device Power Protection	Full protection against reverse polarity							
Electrical Connection	Cable	M12	Cable	M12	Cable	M12	Cable	M12
Insulation Class	Class III (SELV)							
Efficiency Class	A/A+/A++/A+++ (Integrated LED module) compliant with UE Law No. 874/2012							

CONNECTION* with M12-4P Male A Coding

Male	Female	Pin	Connection
		1	+24 Vdc
		2	Not Connected
		3	0 Vdc
		4	Not Connected

CONNECTION* with 10 ft. (3m) Cable, Standard length

PVC 2x 0.17 in ² (0.75 mm ²) L= 10 ft. (3 m)	Conductor	Connection
	1 Black	+24 Vdc
	2 Black	0

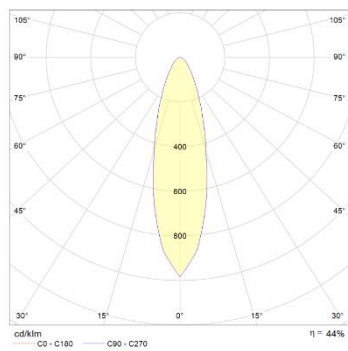
OPTICAL FEATURES

Model	N° and Type of LEDs	LED Lifespan	Light Color	CRI	Light Beam Angle	Luminous Flux	Efficiency
CA0121S04	15 Mid Power LED	60 000 h L70 **	5000 K	80	30°	650 lm	108 lm/W
CA0121S05	15 Mid Power LED	60 000 h L70 **	5000 K	80	90°	600 lm	100 lm/W
CA0121S06	15 Mid Power LED	60 000 h L70 **	5000 K	80	110°	550 lm	92 lm/W
CA0121S07	15 Mid Power LED	60 000 h L70 **	5000 K	80	30°	650 lm	108 lm/W
CA0121S08	15 Mid Power LED	60 000 h L70 **	5000 K	80	90°	600 lm	100 lm/W
CA0121S09	15 Mid Power LED	60 000 h L70 **	5000 K	80	110°	550 lm	92 lm/W
CA0221S04	30 Mid Power LED	60 000 h L70 **	5000 K	80	30°	1300 lm	108 lm/W
CA0221S05	30 Mid Power LED	60 000 h L70 **	5000 K	80	90°	1200 lm	100 lm/W
CA0221S06	30 Mid Power LED	60 000 h L70 **	5000 K	80	110°	1100 lm	92 lm/W
CA0221S07	30 Mid Power LED	60 000 h L70 **	5000 K	80	30°	1300 lm	108 lm/W
CA0221S08	30 Mid Power LED	60 000 h L70 **	5000 K	80	90°	1200 lm	100 lm/W
CA0221S09	30 Mid Power LED	60 000 h L70 **	5000 K	80	110°	1100 lm	92 lm/W
CA0321S04	45 Mid Power LED	60 000 h L70 **	5000 K	80	30°	1950 lm	108 lm/W
CA0321S05	45 Mid Power LED	60 000 h L70 **	5000 K	80	90°	1800 lm	100 lm/W
CA0321S06	45 Mid Power LED	60 000 h L70 **	5000 K	80	110°	1650 lm	92 lm/W
CA0321S07	45 Mid Power LED	60 000 h L70 **	5000 K	80	30°	1950 lm	108 lm/W
CA0321S08	45 Mid Power LED	60 000 h L70 **	5000 K	80	90°	1800 lm	100 lm/W
CA0321S09	4 5Mid Power LED	60 000 h L70 **	5000 K	80	110°	1650 lm	92 lm/W
CA0421S04	60 Mid Power LED	60 000 h L70 **	5000 K	80	30°	2600 lm	108 lm/W
CA0421S05	60 Mid Power LED	60 000 h L70 **	5000 K	80	90°	2400 lm	100 lm/W
CA0421S06	60 Mid Power LED	60 000 h L70 **	5000 K	80	110°	2200 lm	92 lm/W
CA0421S07	60 Mid Power LED	60 000 h L70 **	5000 K	80	30°	2600 lm	108 lm/W
CA0421S08	60 Mid Power LED	60 000 h L70 **	5000 K	80	90°	2400 lm	100 lm/W
CA0421S09	60 Mid Power LED	60 000 h L70 **	5000 K	80	110°	2200 lm	92 lm/W

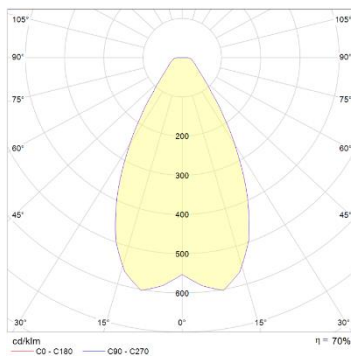
** Flow beam reduced by less than 30% after 60,000 hours

PHOTOMETRIC DIAGRAMS

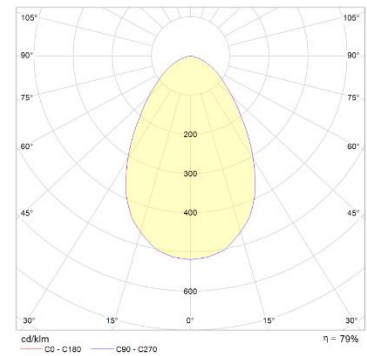
30° Flow beam



90° Flow beam

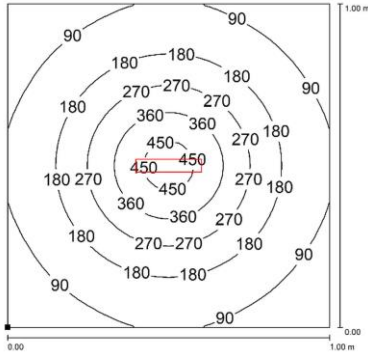


110° Flow beam

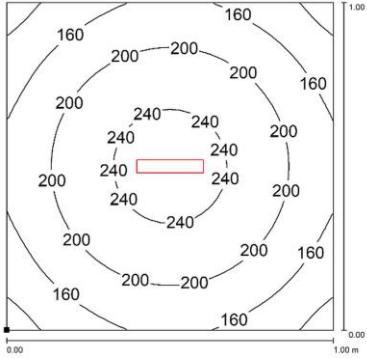


PHOTOMETRIC DIAGRAMS

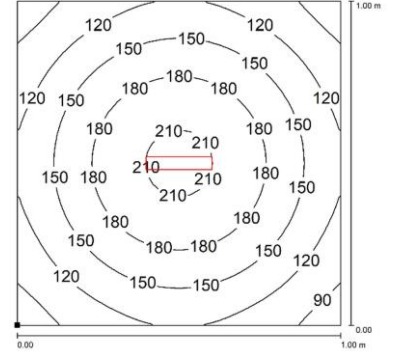
CA0121S04
CA0121S07



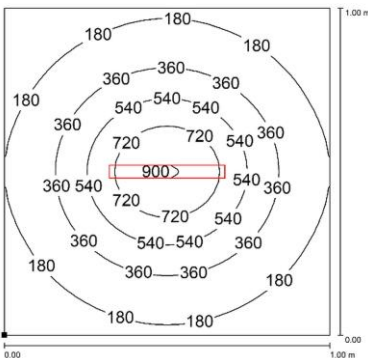
CA0121S05
CA0121S08



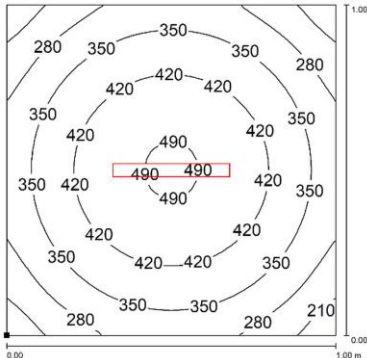
CA0121S06
CA0121S09



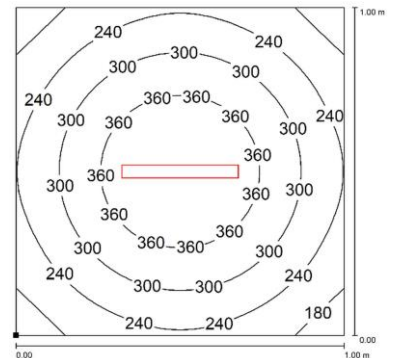
CA0221S04
CA0221S07



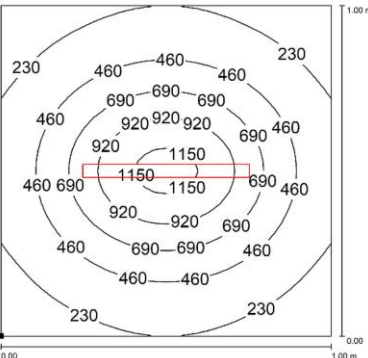
CA0221S05
CA0221S08



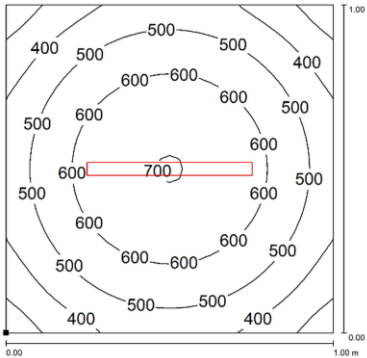
CA0221S06
CA0221S09



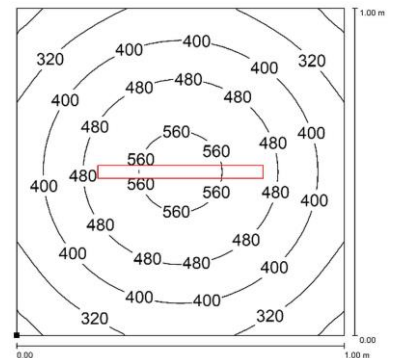
CA0321S04
CA0321S07



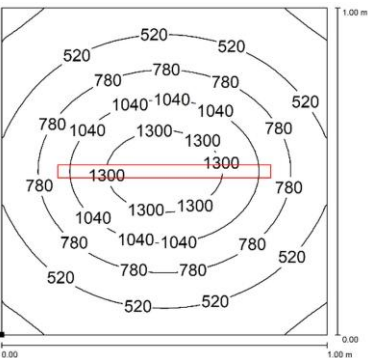
CA0321S05
CA0321S08



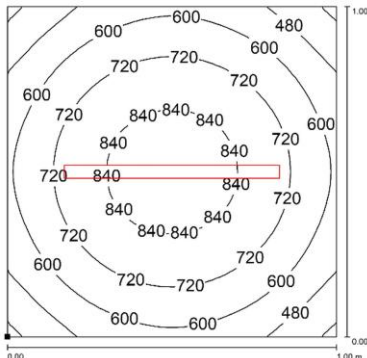
CA0321S06
CA0321S09



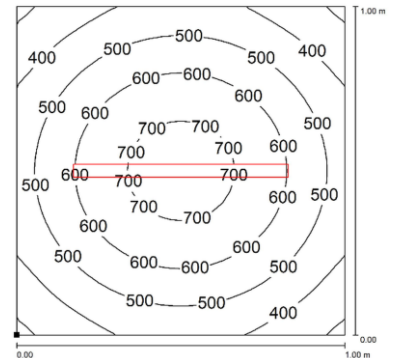
CA0421S04
CA0421S07



CA0421S05
CA0421S08




CA0421S06
CA0421S09





Distance graphic: 1m

PLUG OPTION M12 Cable Connector

Product pictures	Description	Code product
	Pre-assembled M12 4Pin, female, A Coding, CABLE 5mt, UL	M12AFC5

MOUNTING OPTIONS

Product pictures	Description	Code product
	Robust, versatile and vibration resistant, it is a 70° angle adjustment bracket. Made of stainless steel, it is the perfect solution when you need to adjust the direction of the flow beam in high-vibrating applications.	CAFX01
	Strong magnetic disc made of neodymium and high grip. Use along with CAFX01 brackets when you need to move the light frequently and to different positions. Suitable to use in high-vibrating applications.	B05

ORDER CODES

Model	Description
CA0121S04	CO.ALPHA, 8.03"(204mm), 30°, 6W, 24 Vdc, CABLE 10ft (3mt)
CA0121S05	CO.ALPHA, 8.03"(204mm), 90°, 6W, 24 Vdc, CABLE 10ft (3mt)
CA0121S06	CO.ALPHA, 8.03"(204mm), 110°, 6W, 24 Vdc, CABLE 10ft (3mt)
CA0121S07	CO.ALPHA, 8.03"(204mm), 30°, 6W, 24 Vdc, M12-A 4P Male
CA0121S08	CO.ALPHA, 8.03"(204mm), 90°, 6W, 24 Vdc, M12-A 4P Male
CA0121S09	CO.ALPHA, 8.03"(204mm), 110°, 6W, 24 Vdc, M12-A 4P Male
CA0221S04	CO.ALPHA, 13.94"(354 mm), 30°, 12W, 24 Vdc, CABLE 10ft (3mt)
CA0221S05	CO.ALPHA, 13.94"(354 mm), 90°, 12W, 24 Vdc, CABLE 10ft (3mt)
CA0221S06	CO.ALPHA, 13.94"(354 mm), 110°, 12W, 24 Vdc, CABLE 10ft (3mt)
CA0221S07	CO.ALPHA, 13.94"(354 mm), 30°, 12W, 24 Vdc, M12-A 4P Male
CA0221S08	CO.ALPHA, 13.94"(354 mm), 90°, 12W, 24 Vdc, M12-A 4P Male
CA0221S09	CO.ALPHA, 13.94"(504 mm), 110°, 12W, 24 Vdc, M12-A 4P Male
CA0321S04	CO.ALPHA, 19.84"(504 mm), 30°, 18W, 24 Vdc, CABLE 10ft (3mt)
CA0321S05	CO.ALPHA, 19.84"(504 mm), 90°, 18W, 24 Vdc, CABLE 10ft (3mt)
CA0321S06	CO.ALPHA, 19.84"(504 mm), 110°, 18W, 24 Vdc, CABLE 10ft (3mt)
CA0321S07	CO.ALPHA, 19.84"(504 mm), 30°, 18W, 24 Vdc, M12-A 4P Male
CA0321S08	CO.ALPHA, 19.84"(504 mm), 90°, 18W, 24 Vdc, M12-A 4P Male
CA0321S09	CO.ALPHA, 19.84"(504 mm), 110°, 18W, 24 Vdc, M12-A 4P Male
CA0421S04	CO.ALPHA, 25.74"(654 mm), 30°, 24W, 24 Vdc, CABLE 10ft (3mt)
CA0421S05	CO.ALPHA, 25.74"(654 mm), 90°, 24W, 24 Vdc, CABLE 10ft (3mt)
CA0421S06	CO.ALPHA, 25.74"(654 mm), 110°, 24W, 24 Vdc, CABLE 10ft (3mt)
CA0421S07	CO.ALPHA, 25.74"(654 mm), 30°, 24W, 24 Vdc, M12-A 4P Male
CA0421S08	CO.ALPHA, 25.74"(654 mm), 90°, 24W, 24 Vdc, M12-A 4P Male
CA0421S09	CO.ALPHA, 25.74"(654 mm), 110°, 24W, 24 Vdc, M12-A 4P Male
CAFX01	CO.ALPHA, KIT STAINLESS STEEL SIDE BRACKETS 70°
B05	MAGNETIC BASE WITH SCREW M5 Ø30X9mm
M12AFC5	Pre-assembled M12 4Pin, female, A Coding, CABLE 5mt, UL