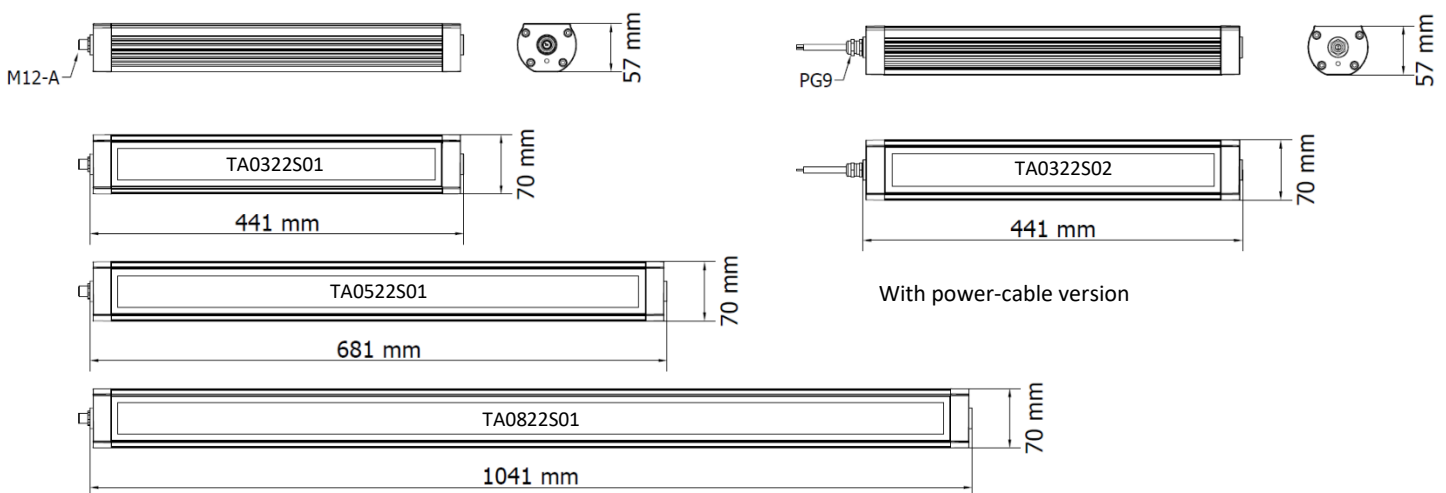




Lighting system for industrial applications, automation, medium and large CNC machines. A sturdy anodized aluminum casing combined with front tempered glass creates a body impenetrable by coolants, emulsions and shavings. Suitable for wet location it's vibration resistant.

- Casing entirely made of aluminum alloy resistant to Emulsion, coolants, oil.
- Hardened frosted glass resistant to chips and providing uniform illumination
- 3 power sizes from 19,5 to 52W to meet any work-area criteria
- 120° Light beam to provide wide and intense illumination
- LED lifespan: 60,000 hours constantly > (L 70)
- Light color temperature 5000 K -- CRI 80
- 230 Vac via M12 or 10ft. (3m) Cable for more flexibility
- 3 mounting options for a quick and practical installation TAFX02 side steel Brackets, TACLIP rear clamping, B03 magnet
- Approval: CE

DIMENSIONI



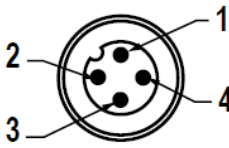
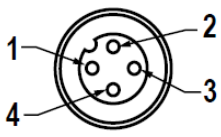
MECHANICAL FEATURES

Model	TA0322S01	TA0322S02	TA0522S01	TA0522S02	TA0822S01	TA0822S02
Casing Material	Anodized extruded aluminum					
Side Enclosers	Painted aluminum					
Surface Treatment	Standard: 10 microns of natural aluminum solution oxidation					
Front Glass	Extra clear tempered 0.20 in (5 mm) thick frosted glass IK06					
Weight	~1,95kg	~2,15kg	~2,75kg	~2,90kg	~4,10kg	4,30kg
Protection Index	IP67					
Impact Resistance	1.00 N m/s					
Operating Temperature	04°F (-20°C) to +113°F (+ 45°C)					
Installation	TAFX02 Stainless-steel side brackets / TACLIP Aluminum rear Clip / Magnet B03					

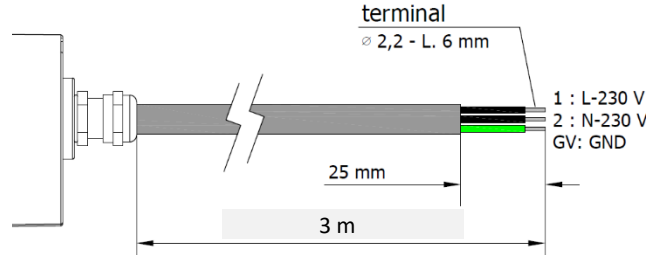
ELECTRICAL FEATURES

Model	TA0322S01	TA0322S02	TA0522S01	TA0522S02	TA0822S01	TA0822S02
Power Input	19.5 W	19.5 W	32,5 W	32,5 W	52 W	52 W
Power Supply	220 ÷ 240 Vac					
Current	0,9 A	0,9 A	1,5 A	1,5 A	2,4 A	2,4 A
Device Power Protection	Full protection against reverse polarity					
Electrical Connection	M12	Cable	M12	Cable	M12	Cable
Insulation Class	Class I					
Efficiency Class	A/A+/A++/A+++ (Integrated LED module) compliant with UE Law No. 874/2012					

CONNECTION* with M12-4P Male A Coding

Male	Female	Pin	Connection
		1	L – 230 Vac
		2	GND
		3	N – 230 Vac
		4	Not Connected

CONNECTION with 3m Cable, Standard length

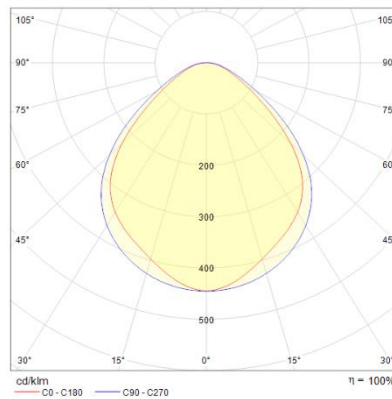
PUR 3G 0,75 mm ² L= 3 m	Conductor	Connection
	1 Black	L – 230 Vac
	2 Black	N – 230 Vac
	Yellow / Green	GND

OPTICAL FEATURES

Model	N° and Type of LEDs	LED Lifespan	Light Color	CRI	Light Beam Angle	Luminous Flux	Efficiency
TA0322S01	63 Mid Power LED	60.000 L70**	5000 K	80	120°	1950 lm	100 lm/W
TA0322S02	63 Mid Power LED	60.000 L70**	5000 K	80	120°	1950 lm	100 lm/W
TA0522S01	105 Mid Power LED	60.000 L70**	5000 K	80	120°	3250 lm	100 lm/W
TA0522S02	105 Mid Power LED	60.000 L70**	5000 K	80	120°	3250 lm	100 lm/W
TA0822S01	168 Mid Power LED	60.000 L70**	5000 K	80	120°	5200 lm	100 lm/W
TA0822S02	168 Mid Power LED	60.000 L70**	5000 K	80	120°	5200 lm	100 lm/W

PHOTOMETRIC DIAGRAMS

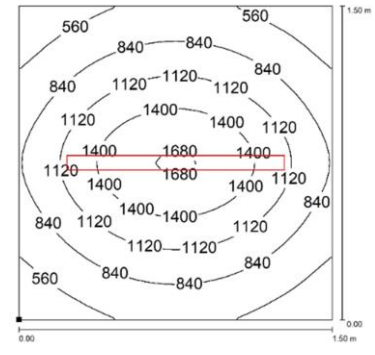
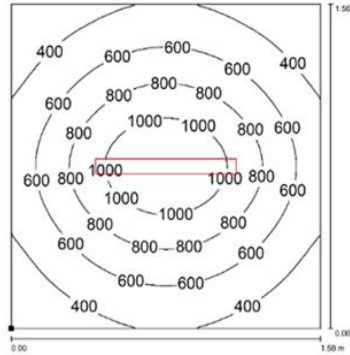
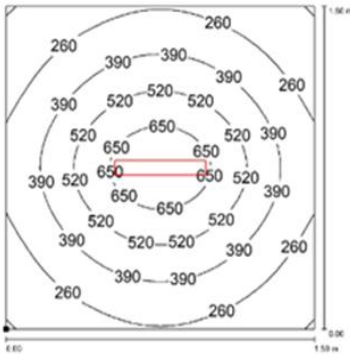
120° Flow beam



TA0322S01 TA0322S02

TA0522S01 TA0522S02

TA0822S01 TA0822S02



Distance graphic: 1m

PLUG OPTION M12 Cable Connector

Product pictures

Description




Code product



M12 4P (F) COD.A with cable L.5m

M12AFCSUL

MOUNTING OPTIONS

Product pictures	Description	Code product
	Robust, versatile and vibration resistant, it is a 90° angle adjustment bracket. Made stainless steel, it is the perfect solution when you need to adjust the direction of the flow beam in high-vibrating applications.	TAFX02
	Sturdy, flexible and vibration resistant, it is a 30° angle adjustment bracket. Made of anodized aluminum, it is the perfect solution when you need to retrofit an obsolete machine tools and machining centers.	TACLIP
	Strong magnetic disc made of neodymium. Use along with ALPHA.FX02 brackets when you need to move the light frequently and to different positions. Suitable to use in high-vibrating applications.	B03

ORDER CODES

Model	Description
TA0322S01	TRACKALPHA, 17.36"(441 mm), 120°, 19.5W, 230Vac, M12-A 4P Male
TA0322S02	TRACKALPHA, 17.36"(441 mm), 120°, 19.5W, 230Vac, Cable 10ft (3mt)
TA0522S01	TRACKALPHA, 26.81"(681 mm), 120°, 32.5W, 230Vac, M12-A 4P Male
TA0522S02	TRACKALPHA, 26.81"(681 mm), 120°, 32.5W, 230Vac, Cable 10ft (3mt)
TA0822S01	TRACKALPHA, 40.98"(1041 mm), 120°, 45.5W, 230Vac, M12-A 4P Male
TA0822S02	TRACKALPHA, 40.98"(1041 mm), 120°, 45.5W, 230Vac, Cable 10ft (3mt)
TAFX02	TRACKALPHA, stainless steel side brackets kit 90°
TACLIP	TRACKALPHA, rear mounting clips kit
B03	Magnet Diam 1.9" (48 mm)
M12AFCSUL	PRE-ASSEMBLED M12 4Pin, FEMALE, A Coding, CABLE 5mt, UL