

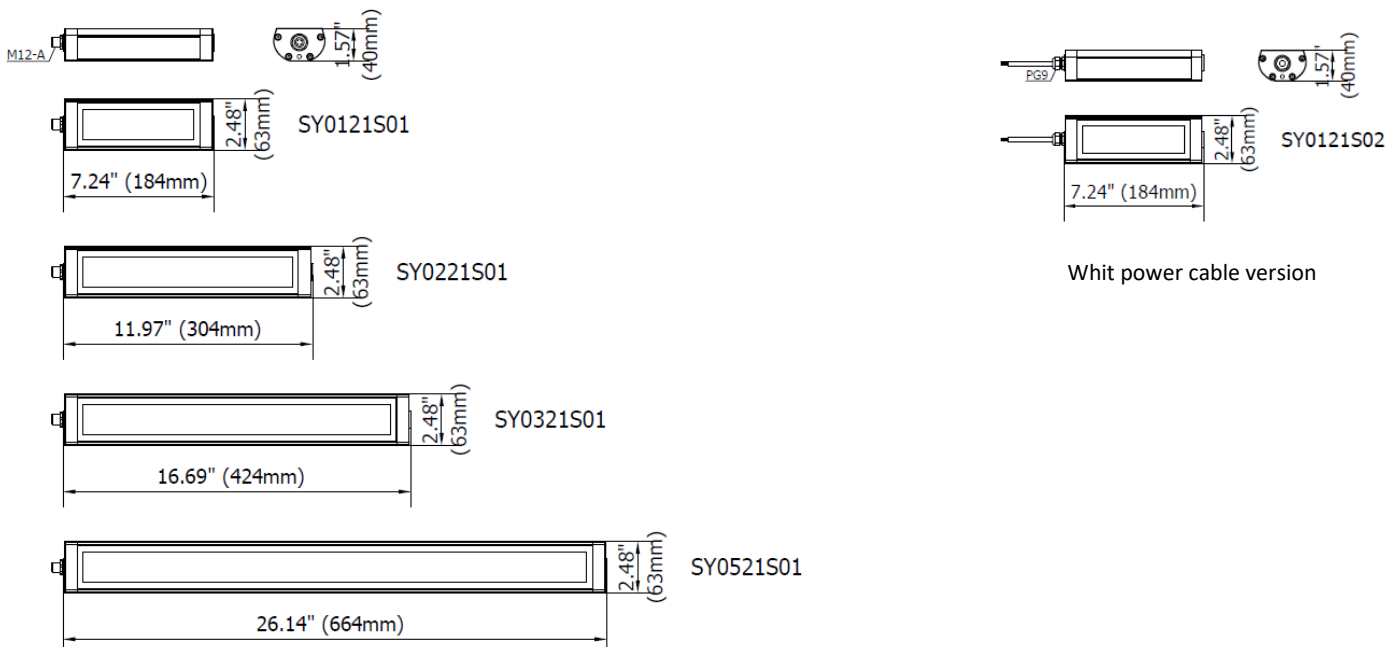


LED lighting system for beverage sector, agro-industry, filling machines, presses, CNC. Lamp with sturdy anodized aluminum structure and 0.2 in (5 mm) tempered glass. Mini Power LED with Integrated Driver System (IDS). Homogeneous white light with high CRI. Adjustable flow beam angle and easy to install.

Direct 24 Vdc power supply.

- Extra-slim housing made of aluminum alloy
- 4 sizes from 7.24 in (3184 mm) to 26.14 in (664 mm)
- High grade of protection IP69 (with cable) / IP67 (with M12 connector)
- Protection from reverse polarity
- Operating temperature from -4°F to 113°F (-20°C to + 45°C)
- LED lifespan > 60,000 h (L 70)
- Light color 5,000 K - CRI 80
- 24 Vdc via M12 or 10ft. (3m) Cable for more flexibility
- Class III IEC

DIMENSIONS



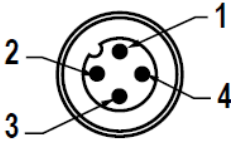
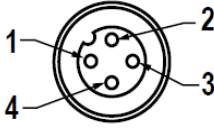
MECHANICAL FEATURES

Model	SY0121S01	SY0121S02	SY0221S01	SY0221S02	SY0321S01	SY0321S02	SY0521S01	SY0521S02
Casing Material	Anodized extruded aluminum							
Side Caps	Anodized aluminum							
Surface Treatment	Standard: 10 microns of natural aluminum solution oxidation							
Front Glass	Extra clear tempered 0.20 in (5 mm) thick frosted glass IK06							
Weight (excluding accessories)	~1.21 lb 0.55 kg	~1.59 lb 0.75 kg	~1.92 lb 0.9 kg	~2.43 lb 1.10 kg	~2.43 lb 1.10 kg	~2.87 lb 1.30 kg	~4.01 lb 1.85 kg	~4.52 lb 2.05 kg
Protection Index	IP67 Compatible with NEMA Type 12	IP69 Compatible with NEMA Type 12	IP67 Compatible with NEMA Type 12	IP69 Compatible with NEMA Type 12	IP67 Compatible with NEMA Type 12	IP69 Compatible with NEMA Type 12	IP67 Compatible with NEMA Type 12	IP69 Compatible with NEMA Type 12
Impact Resistance	1.00 N m/s							
Operating Temperature	-4°F (-20°C) to +113°F (+45°C)							
Installation	SYFX01 Stainless-steel side brackets / Magnet B03							

ELECTRICAL FEATURES

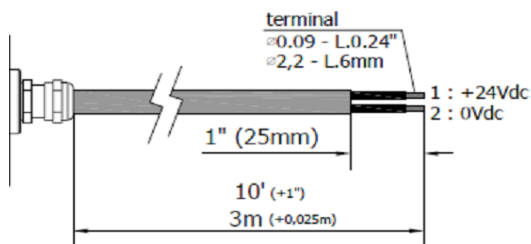
Model	SY0121S01	SY0121S02	SY0221S01	SY0221S02	SY0321S01	SY0321S02	SY0521S01	SY0521S02
Power Input	6.5 W		13 W		19.5 W		32.5 W	
Power Supply	21÷36 Vdc							
Current	0.28 A @ 24 Vdc		0.56 A @ 24 Vdc		0.85 A @ 24 Vdc		1.35 A @ 24 Vdc	
Device Power Protection	Full protection against reverse polarity							
Electrical Connection	M12	Cable	M12	Cable	M12	Cable	M12	Cable
Insulation Class	Class III (SELV)							
Efficiency Class	A/A+/A++/A+++ (Integrated LED module) compliant with UE Law No. 874/2012							

CONNECTION* with M12-4P Male A Coding

Male	Female	Pin	Connection
		1	+24 Vdc
		2	Not Connected
		3	0 Vdc
		4	Not Connected

CONNECTION* with 10 ft. (3m) Cable, Standard length

PVC 2x 0.17 in² (0.75 mm²) L= 10 ft. (3 m)



Conductor Connection

1 Black	+24 Vdc
2 Black	0 Vdc

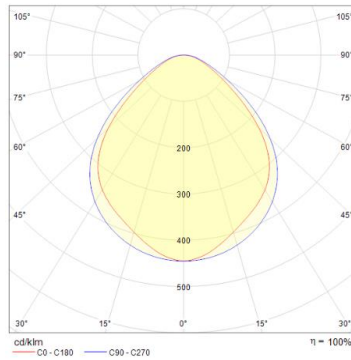
OPTICAL FEATURES

Model	N° and Type of LEDs	LED Lifespan	Light Color	CRI	Light Beam Angle	Luminous Flux	Efficiency
SY0121S01	21 Mid Power LED	60 000 h L70 **	5,000 K	80	Diffuse 120°	~ 650 lm	~ 100 lm/W
SY0121S02	21 Mid Power LED	60 000 h L70 **	5,000 K	80	Diffuse 120°	~ 650 lm	~ 100 lm/W
SY0221S01	42 Mid Power LED	60 000 h L70 **	5,000 K	80	Diffuse 120°	~ 1,300 lm	~ 100 lm/W
SY0221S02	42 Mid Power LED	60 000 h L70 **	5,000 K	80	Diffuse 120°	~ 1,300 lm	~ 100 lm/W
SY0321S01	63 Mid Power LED	60 000 h L70 **	5,000 K	80	Diffuse 120°	~ 1,950 lm	~ 100 lm/W
SY0321S02	63 Mid Power LED	60 000 h L70 **	5,000 K	80	Diffuse 120°	~ 1,950 lm	~ 100 lm/W
SY0521S01	105 Mid Power LED	60 000 h L70 **	5,000 K	80	Diffuse 120°	~ 3,250 lm	~ 100 lm/W
SY0521S02	105 Mid Power LED	60 000 h L70 **	5,000 K	80	Diffuse 120°	~ 3,250 lm	~ 100 lm/W

** Flow beam reduced by less than 30% after 60,000 hours

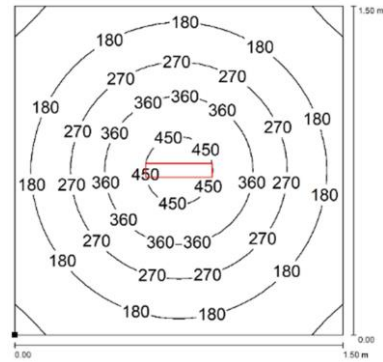
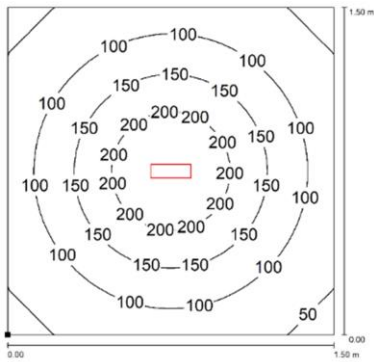
PHOTOMETRIC DIAGRAMS

120° Flow beam



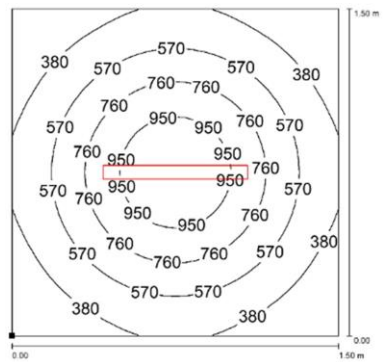
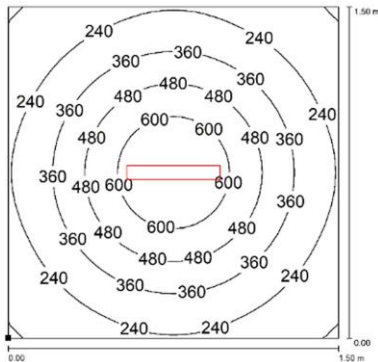
SY0121S01
SY0121S02

SY0221S01
SY0221S02




SY0321S01
SY0321S02

SY0521S01
SY0521S02





Distance graphic: 1m

PLUG OPTION M12 Cable Connector

Product pictures	Description	Code product
	M12 4P (F) COD.A with cable L.16ft (5m)	M12AFC5UL

MOUNTING OPTIONS

Product pictures	Description	Code product
	Robust, versatile and vibration resistant, it is a 100° angle adjustment bracket. Made of stainless steel, it is the perfect solution when you need to adjust the direction of the flow beam in high-vibrating applications.	SYFX01
	Strong magnetic disc made of neodymium and high grip. Use along with SYFX01 brackets when you need to move the light frequently and to different positions. Suitable to use in high-vibrating applications.	B03

ORDER CODES

Model	Description
SY0121S01	SYRMA, 7.25"(184mm), 120°, 6.5W, 24Vdc, M12-A 4P Male
SY0121S02	SYRMA, 7.25"(184mm), 120°, 6.5W, 24Vdc, Cable 10ft(3m)
SY0221S01	SYRMA, 11.97"(304mm), 120°, 13W, 24Vdc, M12-A 4P Male
SY0221S02	SYRMA, 11.97"(304mm), 120°, 13W, 24Vdc Cable 10ft(3m)
SY0321S01	SYRMA, 16.69"(424mm), 120°, 19.5W, 24Vdc, M12-A 4P Male
SY0321S02	SYRMA, 16.69"(424mm), 120°, 19.5W, 24Vdc, Cable 10ft(3m)
SY0521S01	SYRMA, 26.14"(664mm), 120°, 32.5W, 24Vdc, M12-A 4P Male
SY0521S02	SYRMA, 26.14"(664mm), 120°, 32.5W, 24Vdc, Cable 10ft(3m)
SYFX01	SYRMA, chrome-plated stainless steel side brackets kit 100°
B03	Magnet Diam 1.9" (48 mm)
M12AFC5UL	PRE-ASSEMBLED M12 4Pin, FEMALE, A Coding, CABLE 5mt, UL